



Biomed Virtual Learning

Medical Terminology

April 29, 2020



Medical Terminology/The Digestive System

Lesson: April 29, 2020

Objective/Learning Target:

Students will be able to use proper word parts to create terms related to the Digestive System.

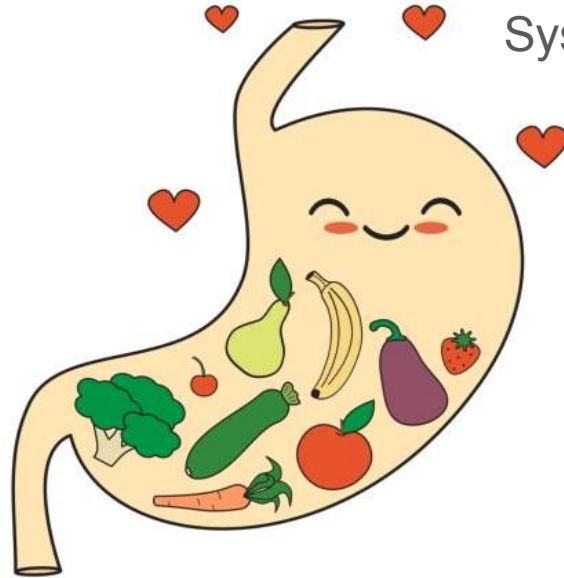
Bellwork: Answer in your notebook or sheet of paper

Bellwork 1:

Where does the first process of digestion occur?

Bellwork 2:

What is the function of the Digestive System?



Bellwork Questions/Answers

Bellwork 1: Where does the first process of digestion occur? -Digestion first starts in the mouth

Bellwork 2: What is the function of the Digestive System? -Functions vary between....Bringing food to the body for nutrients, breaking down food into usable nutrients, Absorbing those nutrients, eliminating solid wastes from the body

Combining Forms

Use the internet to find the meaning of these common Digestive System combining forms. Write them in your notebook or piece of paper

- | | | | |
|--------------|--------------------|--------------------|------------------|
| 1) Abdomin/o | 2) Aliment/o | 3) An/o | 4) Appendic/o |
| 5) Bil/o | 6) Bucc/o | 7) Cec/o | 8) Cheil/o |
| 9) Chol/e | 10) Cholecyst/o | 11) Col/o; Colon/o | 12) Dent/o |
| 13) Duoden/o | 14) Enter/o | 15) Esophag/o | 16) Diverticul/o |
| 17) Gastr/o | 18) Hemat/o; Hem/o | 19) Hepat/o | 20) Herni/o |

Combining forms continued....

21) ile/o

22) Jejun/o

23) Labi/o

24) Lapar/o

25) Lingu/o

26) Lith/o

27) Odont/o

28) Or/o

29) Palat/o

30) Pancreat/o

31) Peps/o

32) Phag/o

33) Pharyng/o

34) Polyp/o

35) Proct/o

36) Pylor/o

37) Rect/o

38) Sial/o

39) Sigmoid/o

40) Stomat/o

Combining Form Meaning (answers)

- 1) Abdomin/o -Abdomen
- 2) Aliment/o -Nourishment, nutrition
- 3) An/o -Anus
- 4) Appendic/o -Appendix
- 5) Bil/o -Bile
- 6) Bucc/o -Cheek
- 7) Cec/o -Cecum
- 8) Cheil/o -Lip
- 9) Chol/e -Bile
- 10) Cholecyst/o - Gallbladder
- 11) Col/o; Colon/o - Colon
- 12) Dent/o - Tooth
- 13) Duoden/o - Duodenum
- 14) Enter/o- Small Intestine
- 15) Esophag/o -Esophagus
- 16) Diverticul/o -Diverticulum
- 17) Gastr/o -Stomach
- 18) Hemat/o; Hem/o -Blood
- 19) Hepat/o -Liver
- 20) Herni/o -Hernia (protrusion)

Combining Form Answers Continued...

21) ile/o - ileum

23) Labi/o - Lip

25) Lingu/o -Tongue

27) Odont/o -Tooth

29) Palat/o -Palate

31) Peps/o -Digestion

33) Pharyng/o - Pharynx

35) Proct/o -Rectum, Anus

37) Rect/o -Rectum

39) Sigmoid/o -Sigmoid Colon

22) Jejun/o - Jejunum

24) Lapar/o - Abdomen

26) Lith/o -Stone, Calculus

28) Or/o -Mouth

30) Pancreat/o -Pancreas

32) Phag/o - Eat, Swallow

34) Polyp/o - Polyp

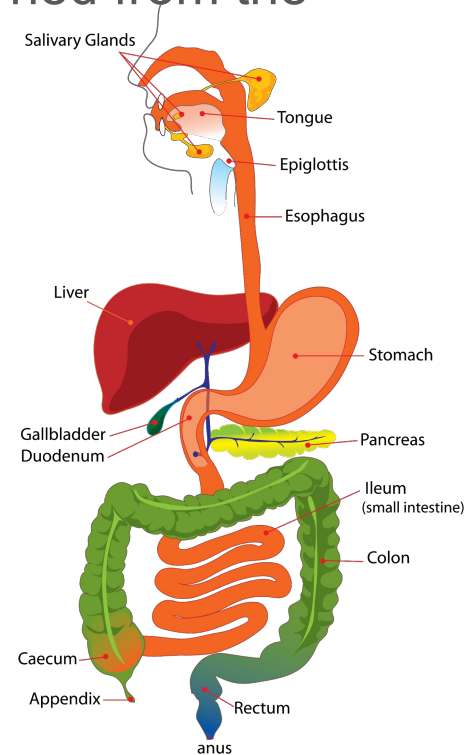
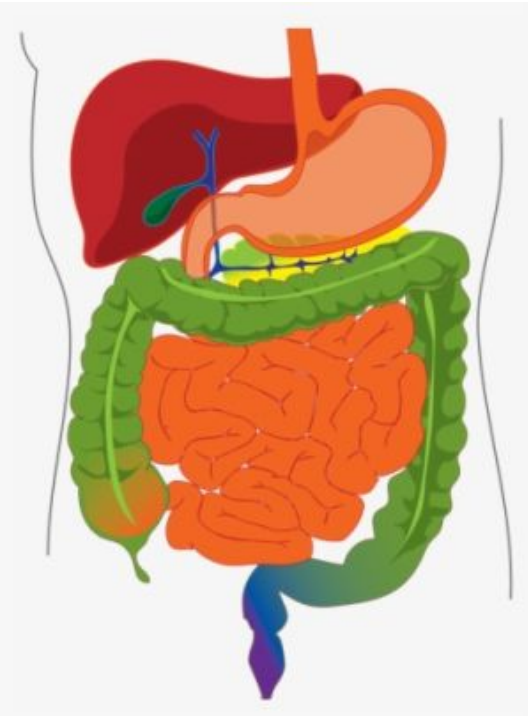
36) Pylor/o -Pylorus

38) Sial/o - Saliva

40) Stomat/o -Mouth

Use What you Just Learned!

Click on the attachment to practice what you just learned from the [combining forms!](#)



Important Prefixes and Suffixes

Prefixes

Endo- = In, within

Hyper- = Above, excess

Peri- = Around, Surrounding

Post- = After, behind

Retro- = backward, behind

Suffixes:

-algia = pain

-cele = herniation, protrusion

-dynia= pain

-gen= origin, production

-graphy= technique of producing images

-logist= one who specializes in

-malacia= softening

-prandial=meal

-rrhaphy= suturing

-scopy= viewing or examining with instrument

-ase =enzyme

-centesis = puncture to aspirate

-emesis= vomiting

-gram= record, recording

-iasis= condition of

-logy= study of

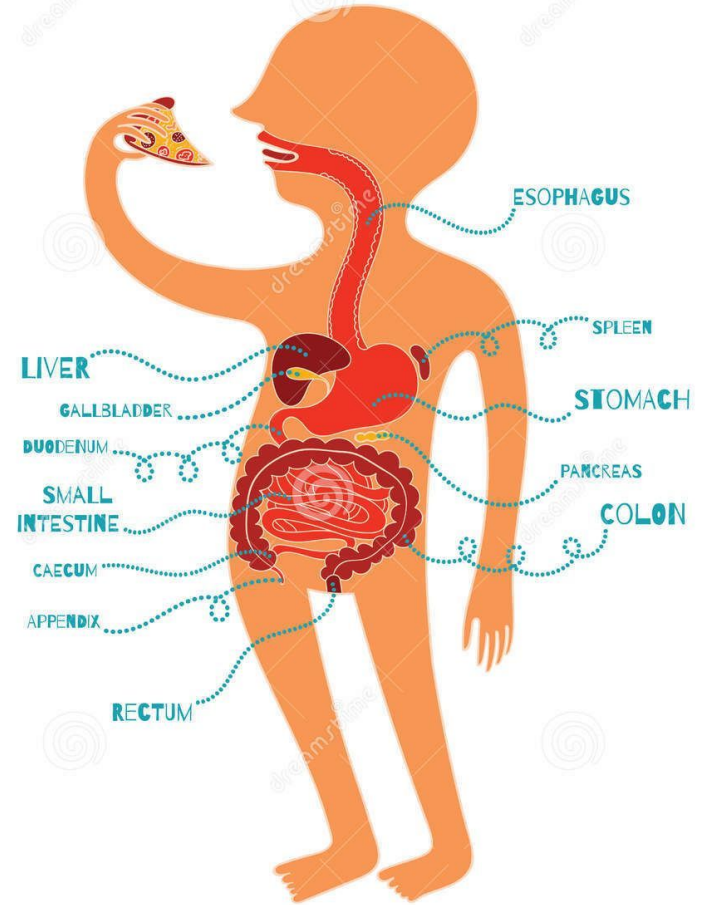
-megaly= enlargement

-potsis=prolapse, drooping, sagging

-scope= instrument for examination

Digestive system

- stenosis=stricture, narrowing
- stomy= surgical opening
- tomy= incision
- tripsy= crushing



Practice Using Prefixes/Suffixes/Combining Forms

[Practice](#)

[Quizlet Practice](#)

[Quiz Practice 2](#)